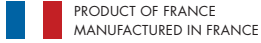


OVERHANG PARAPET CLAMP

| PERSONNEL LIFTING | SUSPENSION



Our **overhang parapet clamp** can be used to suspend a temporary platform to carry out works on industrial installations, such as bridges, storage tanks or other specific buildings.



PRACTICALITY

- ✓ Suitable for maintenance works on storage tanks and port terminals when the facade is set back from the roof.
- ✓ Maximum working load: 500 kg
- ✓ Compatible with our MODULECO and MODULAHO suspended platforms equipped with e.lift 350 and e.lift 501 hoists and our individual cradles.



COMFORT

- ✓ Easy to transport, assemble and store: does not require counterweights / assembly with screws to achieve maximum safety
- ✓ Mobility over entire perimeter of the roof and guaranteed stability via the support wheels and tension cable
- ✓ Adjustable supports on adjustable wheel
- ✓ Made from galvanised steel, which is highly resistant to bad weather
- ✓ Minimal maintenance



The **overhang parapet clamp** is mounted on the front member of a FIXAPOUTRE suspension beam placed horizontally. The beam must be installed first.

The overhang parapet clamp can be used with the Fixapoutre beam (reference 070555) to carry out works on a tank gangway.

The maximum load capacity (WLL) of an overhang parapet clamp used with a suspension beam is 500 kg and its weight is 37 kg.

Custom designs are possible for an overhang parapet clamp based on specifications to be jointly defined with the design department.

For more information:

www.fixator.com





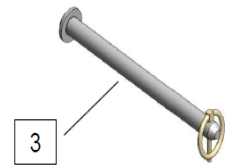
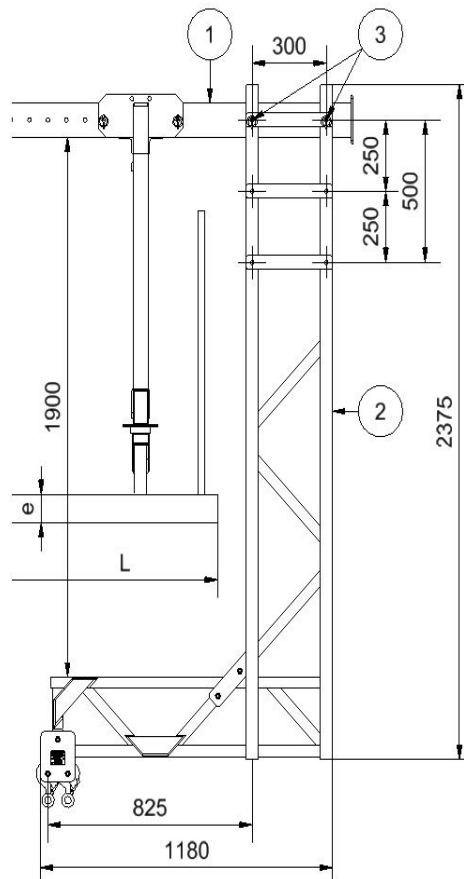
OVERHANG PARAPET CLAMP

I PERSONNEL LIFTING | SUSPENSION

PRODUCT OF FRANCE
MANUFACTURED IN FRANCE

CONFIGURATION

The overhang parapet clamp comprises elements that can be assembled as follows:



It is important to ensure that the linchpins are closed in the right direction.

TECHNICAL SPECIFICATIONS

Quantity	Description	Reference	Weight (kg)
1	Overhang parapet clamp (reference 070556)	2	37
2	Pin $\varnothing 16$ + linchpin $\varnothing 4.5$	3	0.4



8 rue du Bois Rinier - P.A. - BP 10041
49181 St-Barthélemy-d'Anjou Cedex
FRANCE

T. : + 33 (0) 241 311 700
F. : + 33 (0) 241 311 705

Email : info@fixator.com

www.fixator.com



Install the cables.

Secure the clamp with a strap or sling so that it does not fall.

The clamp must be mounted on the front member.

Choose the required vertical position (from the 3 positions spaced 250 mm apart) and install the 2 x $\varnothing 16$ pins + linchpins.