



Quality Process complying
with the EN-ISO 9001 standard
Machine directive 2006/42/CE

BUILDING

ELEVATORS

INDUSTRY

WIND POWER

SECURICHUTE 600 KG - 2T

I PERSONNEL LIFTING I FALL-ARREST DEVICES

PRODUCT OF FRANCE
MADE IN FRANCE

Securichute fall-arrest systems are designed to secure your personal lifting solution (platform, cradle or bosun chair) in the event of breakage or failure of the working cable which holds your hoist. Connected to a secondary cable, the safety cable, these safety devices retain the load and prevent it from crushing to the ground. Fixator offers 4 models to suit your lifting needs (see table below).



INSTALLATION

✓ A SECURICHUTE can be installed in different ways :

- Directly on the winch/es;
- On a C-stirrup.

For the assembly of the Securichute 2T, please consult us.



Securichute on
the winch



Securichute on a
C-stirrup



SAFETY

✓ Jaws triggering occurs if:

- Overspeed >30m/min;
- Sudden acceleration;
- Tilting >14°

- ✓ Emergency stop button
- ✓ Manual reset



COMFORT

- ✓ Automatic wire-rope routing
- ✓ No working height limit
- ✓ Light and ergonomic
- ✓ Easy to use
- ✓ Steel and aluminium design

Description	SECURICHUTE 600	SECURICHUTE 800	SECURICHUTE 1000	SECURICHUTE 2T
Type	526200 and 526200A*	526300	526400, 526400B and 526400A*	528A and 528B*
Sales Reference	215200 and 215230	215300	215400, 215330 and 215404	201010
Image				
Working Load Limit - WLL	600 kg	800 kg	1000 kg	2000 kg
Operating speed	0,5 m/s - 30 m/min			
Tilt control	Yes, for tilting > 14°			No
Weight	7 kg			13,4 kg
Compatible with Fixator winches	e.lift 501, e.lift 600 NEO, e.lift 601, Liftho 600 NEO	e.lift 800 NEO Liftho 800 NEO	e.lift 1000 NEO Liftho 1000 NEO	/
Min. breaking load of the anchoring point	2400 kg	3200 kg	4000 kg	8000 kg
Min. breaking load of the wire-rope	4800 kg	6400 kg	8000 kg	16000 kg
Ø and type of wire-rope	Ø8.3 mm 5x19, 6x17 or 5x26, synthetic core steel	Ø9.5 mm 5x19 or 5x2, synthetic core steel	Ø10.2 mm 5x19 or 5x2, synthetic core steel	Ø14 mm 5x26 synthetic core steel
Dimensions	253x180x95 mm			160x370x133 mm
Operating temperature	-10°C / +55°C			

*Equipped with an electric contact that stops the winch if the fall arrester is triggered.

FIXATOR
8 Rue du Bois Rinier, 49181, Saint-Barthélemy d'Anjou, France
T. 0033 (0)241 31 17 00 Email : info@fixator.com

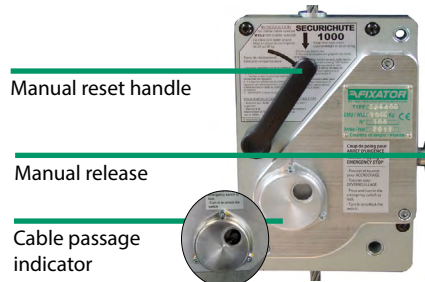
FIXATOR
SAFETY AT THE VERY TOP
www.fixator.com
MANUFACTURER OF HEIGHT ACCESS SOLUTIONS SINCE 1924

SECURICHUTE 600 - 2000 KG

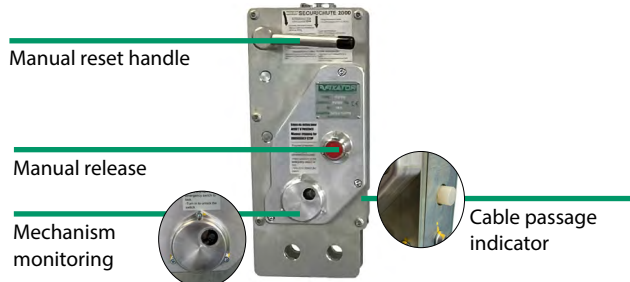
I PERSONNEL LIFTING I FALL-ARREST DEVICES

STANDARD EQUIPEMENT

Securichute 600 - 1000 kg



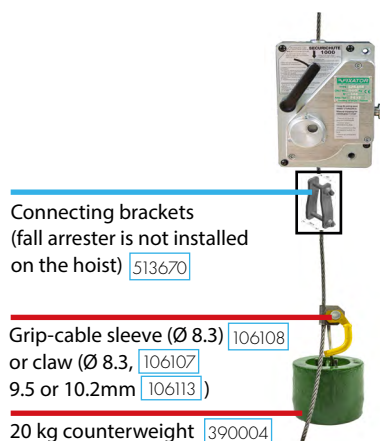
Securichute 2T (2000 kg)



Compulsory ADDITIONAL EQUIPMENT

Optional

Securichute 600 - 1000 kg



Securichute 2T (2000 kg)

