

FIXEO

I PERSONNEL LIFTING I Suspension system

PRODUCT OF FRANCE
MANUFACTURED IN FRANCE



CONVENIENCE

- Adapts to any type of work site
- Maximum working area for minimum equipment
- Reduced storage costs. Components are easy to store and transport
- Compatible with Modulaho and Moduleco platforms and e.lift 500, e.lift 501, e.lift 600 and e.lift 800 hoists (lifting speed: 9m/min - integrated safety system according to European Standard)



MODULARITY

- Juxtaposition of several masts is possible to cover a complete facade. FIXEO can be adapted to a wide range of building configurations
- Composition ranging from 2 to 12 metres in length and up to 100 metres in height. It is possible to use as many masts as required



COMFORT AND SAFETY

- High platform stability. Support on the ground by means of adjustable jack bases and fixing on the front every 6 metres (single, double and adjustable mooring)
- Agile installation thanks to reduced handling: 2 people are required for assembly and disassembly
- Small footprint on the ground and on the building



FIXEO suspended mast platforms allow construction or maintenance work at height when the roof of a building does not allow any hanging. Starting from the ground, FIXEO provides an economical, modular and safe solution. The maximum load capacity is up to 900 Kg.

It is possible to use several platforms simultaneously. The orders of the distribution centers remain independent of each other.

Companies that already own suspended platforms and/or winches can only use the components of the masts and change the supporting bracket. This enables them to optimise investment costs.

For more information :
www.fixator.com



FIXATOR
SAFETY AT THE VERY TOP



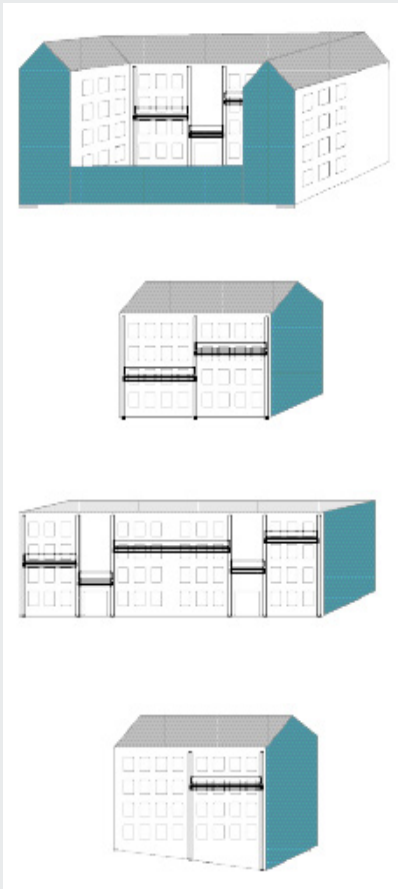
FIXEO

PERSONNEL LIFTING | Suspension system

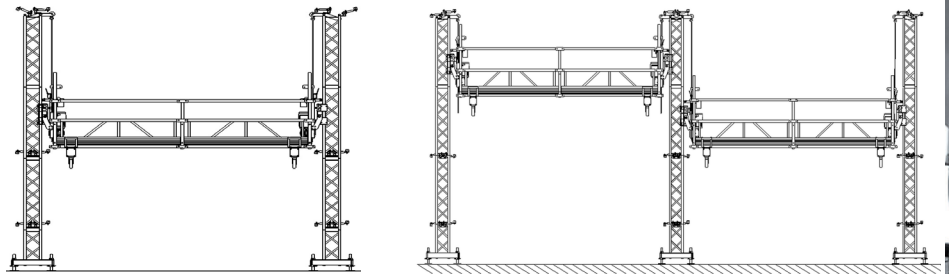
PRODUCT OF FRANCE
MANUFACTURED IN FRANCE

PLATFORM LOAD TABLE

Lg.	Composition	e.lift 501		600		e.lift 800	
		Max. load	Number of pers.	RL Maxi Kg	Maxi	Max. load	Number of pers.
2m		360 kg	2	360	2	360 kg	2
3m		540 kg	3	540	3	540 kg	3
4m		720 kg	4	720	4	720 kg	4
5m		600 kg	5	900	5	900 kg	5
6m		600 kg	6	900	6	900 kg	6
7m		600 kg	6	800	6	800 kg	7
8m		520 kg	5	800	6	800 kg	8
9m		480 kg	5	800	6	800 kg	8
10m		480 kg	5	560	6	560 kg	6
11m		480 kg	5	480	5	480 kg	5
12m		400 kg	4	400	4	400 kg	4

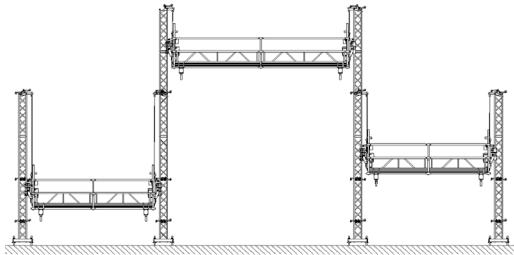


FIXEO CONFIGURATIONS

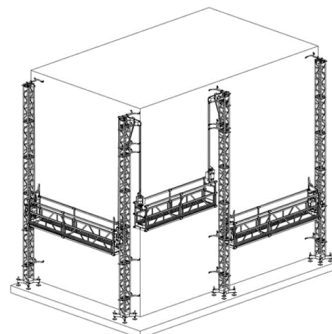


FIXEO 2 masts

FIXEO 3 masts



FIXEO 4 masts



Gallows and corner platform



8 rue du Bois Rinier - P.A. - BP 10041
49181 St-Barthélemy-d'Anjou Cedex
FRANCE

T. : + 33 (0) 241 311 700
Fax : + 33 (0) 241 311 705

Email : info@fixator.com

www.fixator.com

